

KIT FEATURES

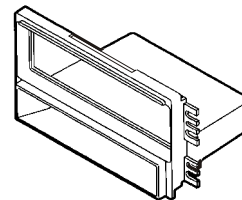
- ▶ DIN head unit provisions
- ▶ Pocket

99-7313

INSTALLATION INSTRUCTIONS

KIT COMPONENTS

Radio Housing



APPLICATIONS

CAR	PAGE
HYUNDAI	
Elantra 2001-02.....	1-2
Tiburon 2003.....	1-2

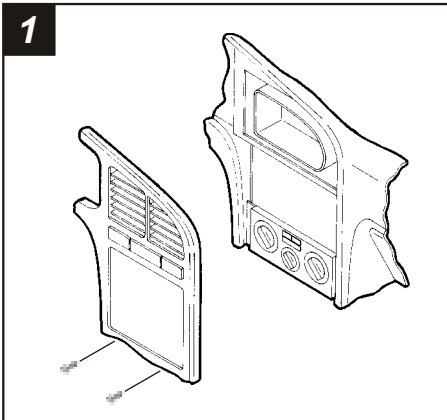


TOOLS REQUIRED

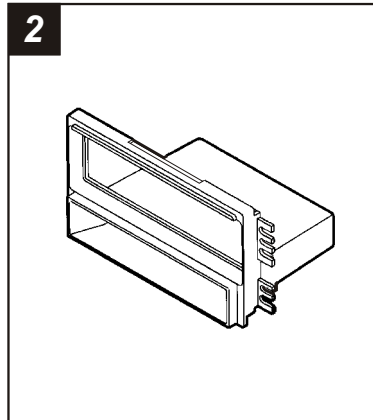


Phillips screwdriver

HYUNDAI Elantra 2001-02

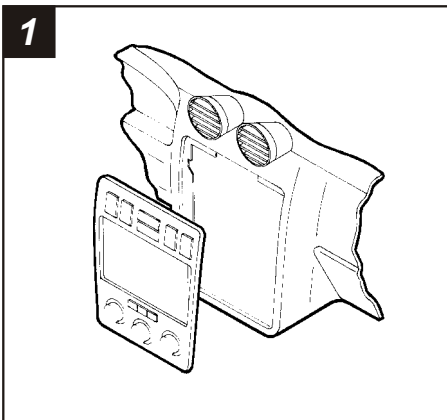


Disconnect the negative battery terminal to prevent an accidental short circuit. Remove (2) Phillips screws under the instrument cluster. Remove the ashtray and (2) Phillips screws exposed in the ashtray cavity. Unclip the radio/instrument cluster trim bezel and remove. Remove (4) Phillips screws securing the factory head unit and disconnect the wiring.

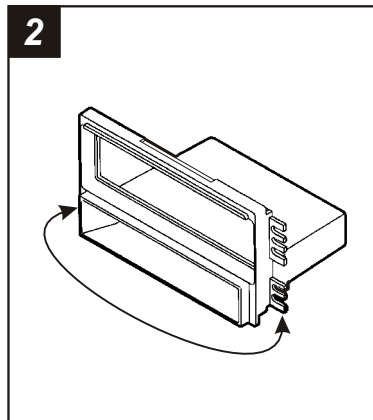


Locate the **Radio Housing**. Skip to the *Installation Instructions for ALL VEHICLES on Page #2*.

HYUNDAI Tiburon 2003

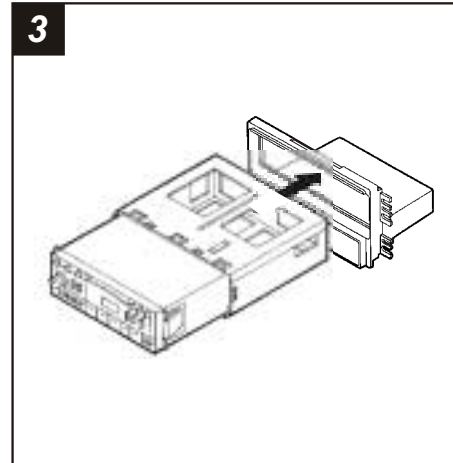


Disconnect the negative battery terminal to prevent an accidental short circuit. Unclip the radio/climate control trim bezel (starting with the bottom edge) and remove the bezel. Remove (2) Phillips screws securing the factory head unit and disconnect the wiring.

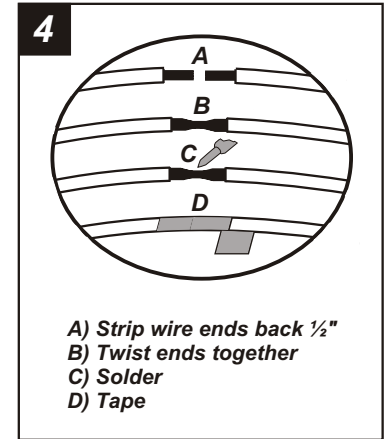


Cut and remove the LOWER mounting tabs on the **Radio Housing**. Skip to the *Installation Instructions for ALL VEHICLES on Page #2*.

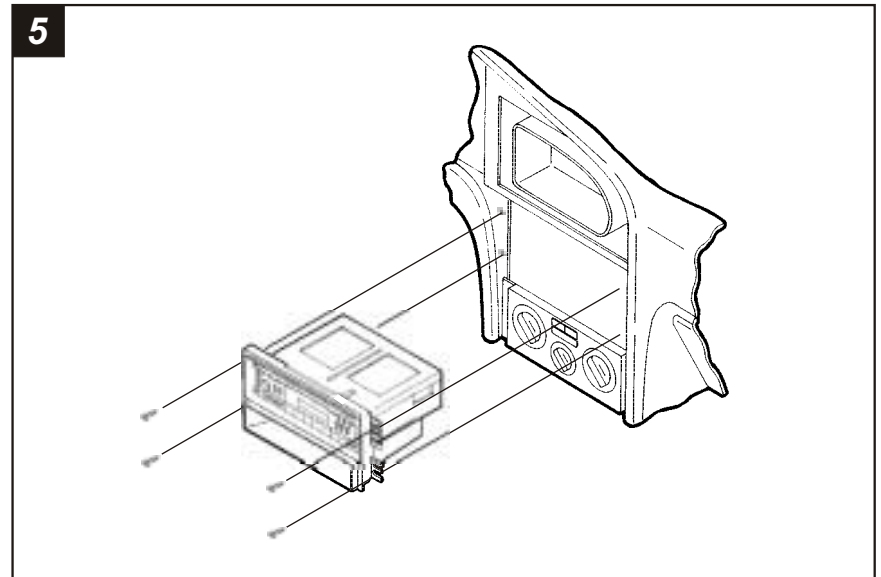
ALL VEHICLES



Slide the DIN cage into the **Radio Housing** and secure by bending the metal locking tabs down. Slide the aftermarket head unit into the cage until secure.



Locate the factory wiring harness in the dash. Metra recommends using the proper mating adaptor and making connections as shown. (Isolate and individually tape off the ends of any unused wires to prevent electrical short circuit).



Re-connect the battery terminal and test the unit for proper operation. Mount the head unit/kit assembly to the sub-dash with the Phillips screws previously removed in step #1.